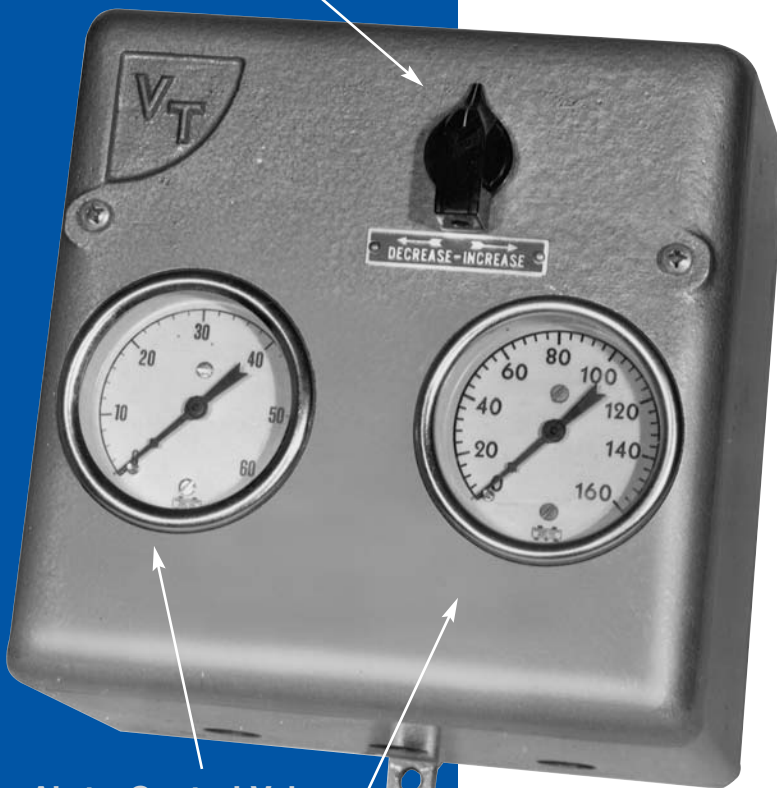


VALV-TROL STEAM PRESSURE CONTROLLERS

Model	Type	Process PSI	Control Pressure PSI	Use With
C-0162	Direct Acting	30-500	0-35	Direct Acting/ Normally Open Valves
C-0164	Reverse Acting	30-500	0-35	Reverse Acting/ Normally Closed Valves

Set Point Adjustment



Air-to-Control Valve

System Pressure

Valv-Trol Pressure Controllers are non-electrical pneumatic devices used to modulate control valves (usually diaphragm actuated valves). They are the key components in closed loop control systems that monitor system pressure, compare to a set point and signal a control valve to move in response. Since this cycle is continuous, the result is a steady system pressure. These controllers offer the advantage of safe, reliable system control, and remarkable low price.

Two models are available with three system pressure ranges. The Model C-0162 is for use with **normally open (direct acting)** control valves. The Model C-0164 is for use with **normally closed (reverse acting)** control valves. Each has an output signal of zero to 35 PSI air. Both of these controls are widely used with Valv-Trol Diaphragm Valves to control the pressure (therefore the temperature) of steam heated components, such as platens, rollers, and vulcanizers. Accuracies of ± 1 PSI are common on such systems.

The following operating ranges are available:

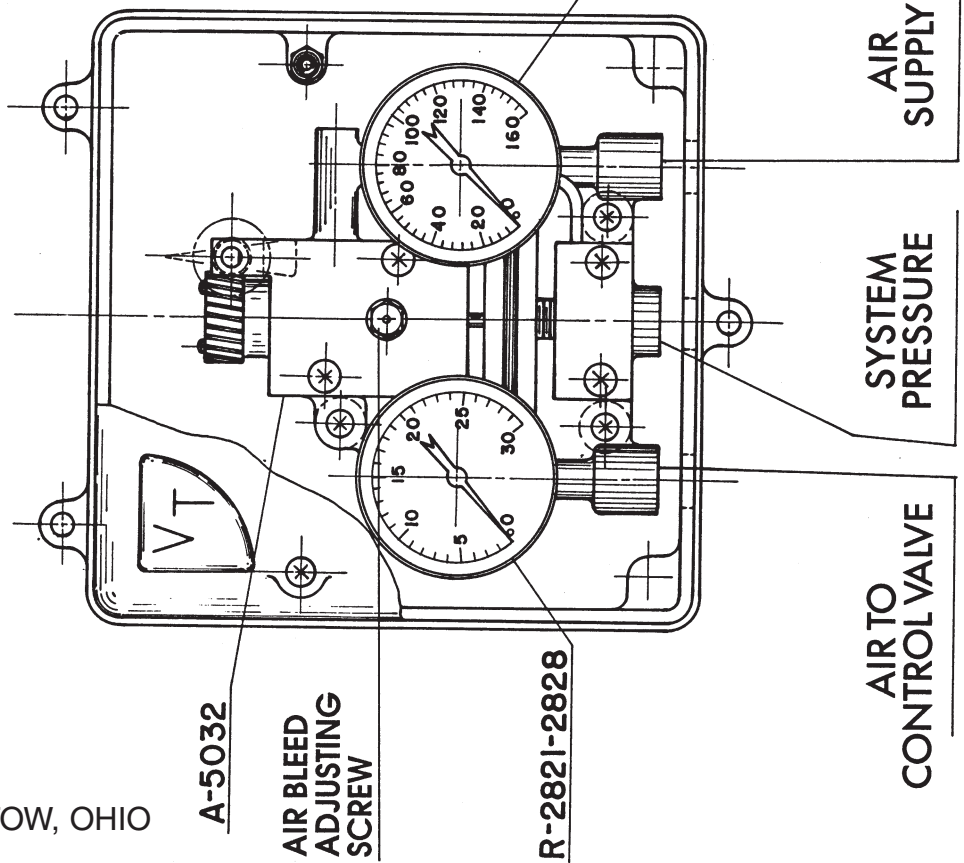
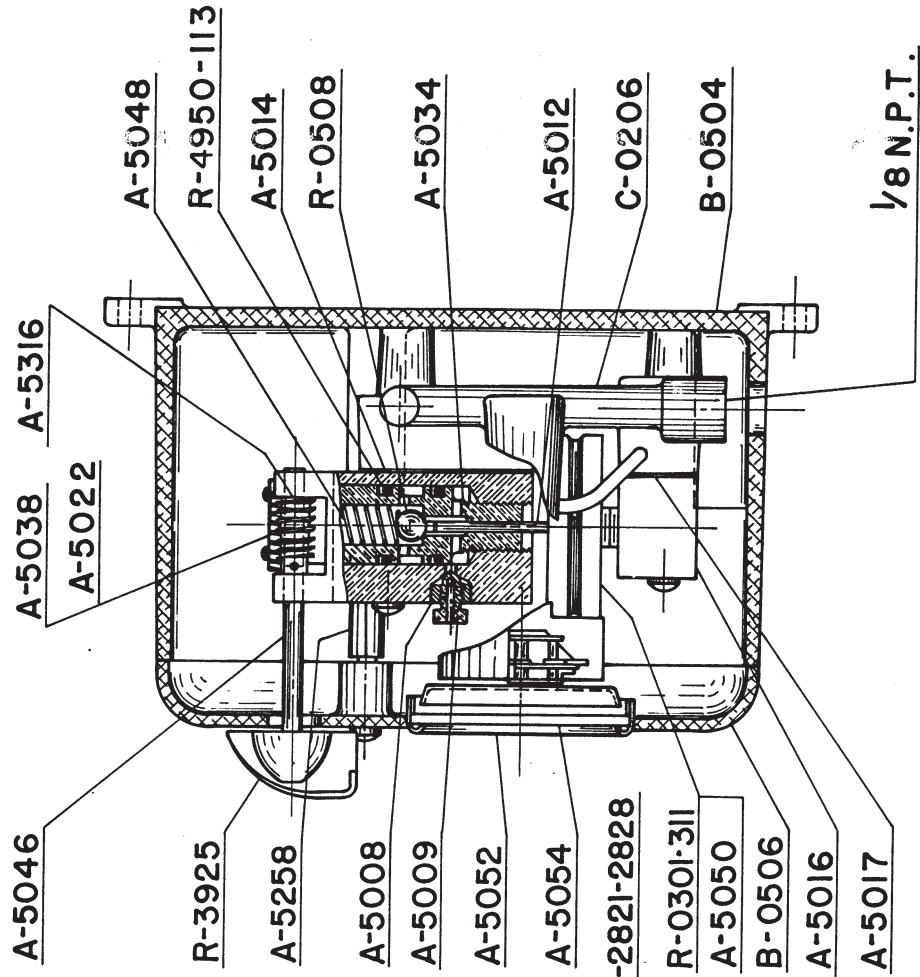
- 1.0—100 PSI
- 1.5—150 PSI
- 3.0—300 PSI

Sensing elements and pressure gauges should be chosen so that the desired set pressures are about in the middle of the total operating range.

DIRECT ACTING PRESSURE CONTROLLER

MODEL C-0162

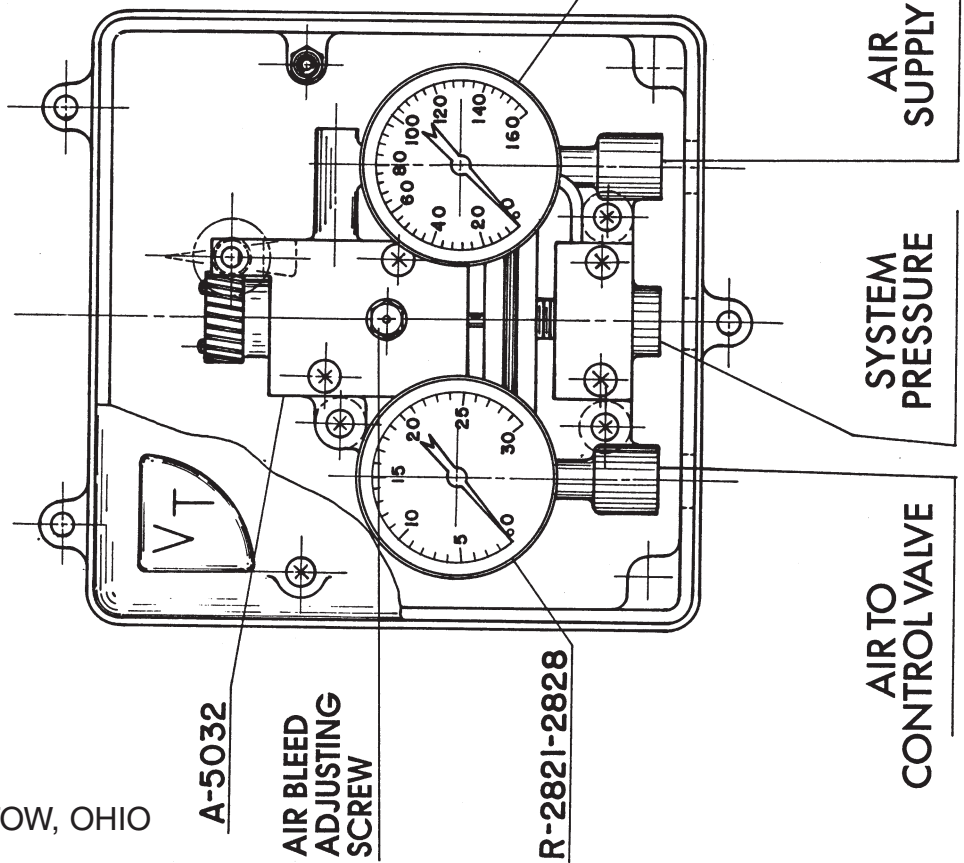
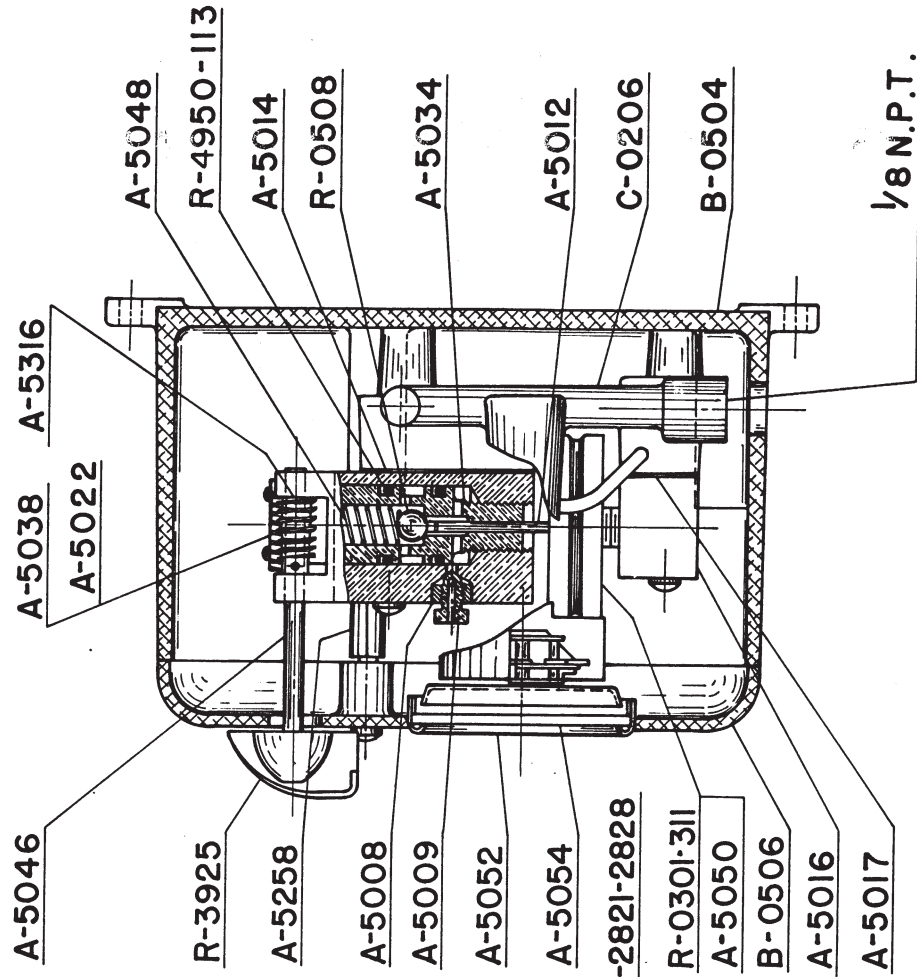
THE VALV-TROL CO., STOW, OHIO



REVERSE ACTING PRESSURE CONTROLLER

MODEL C-0164

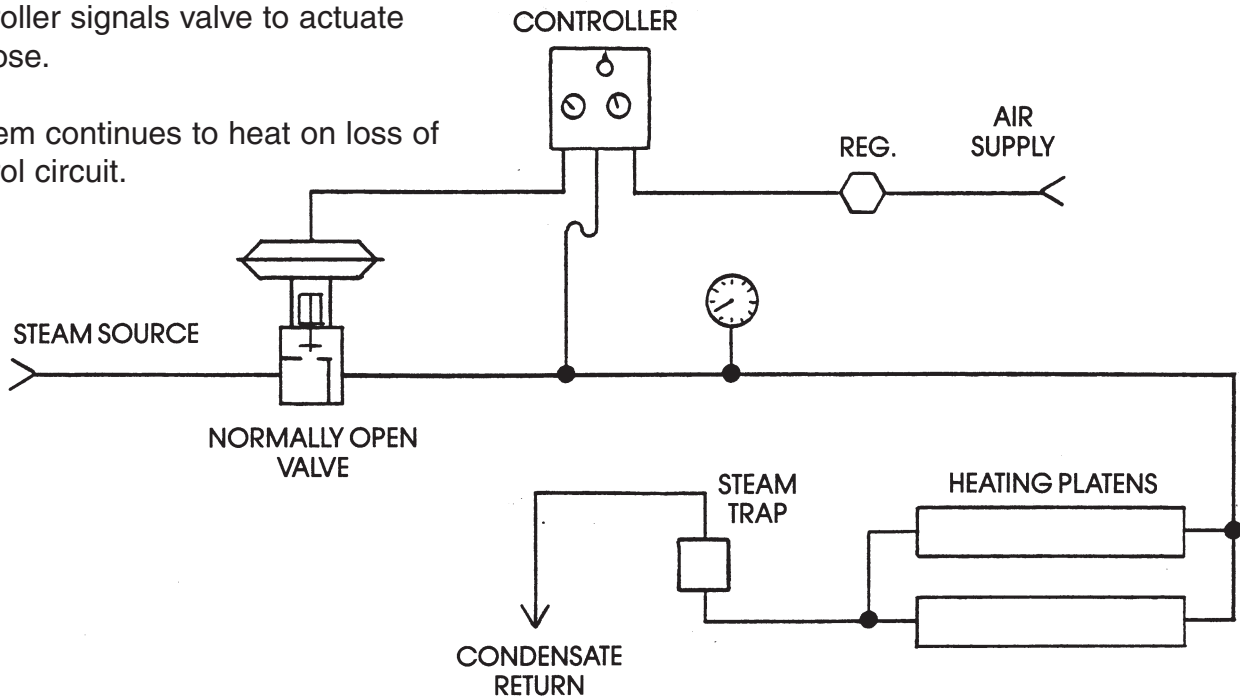
THE VALV-TROL CO., STOW, OHIO



STEAM CIRCUIT USING C-0162 D.A. CONTROLLER WITH A VALV-TROL DIRECT ACTING (N.O.) CONTROL VALVE

As pressure rises above set point, controller signals valve to actuate or close.

System continues to heat on loss of control circuit.



STEAM CIRCUIT USING C-0164 R.A. CONTROLLER WITH A VALV-TROL REVERSE ACTING (N.C.) CONTROL VALVE

As pressure rises above set point, controller signals valve to de-actuate or close.

System cools on loss of control circuit.

